

## MATCHING NISSAN IMMOBILISER KEYS

Choose function ya “NISSAN ANTI-THEFT SYSTEM” kwenye machine yeyote unayo

### ONYO:

“PIN must be entered when you register the key. May be ngoja nikupe meaning ya hizi abbreviations”

**PIN** Personal Identification Number

**NATS** Nissan Anti-Theft System

**IMMU** Immobilizer Control Unit

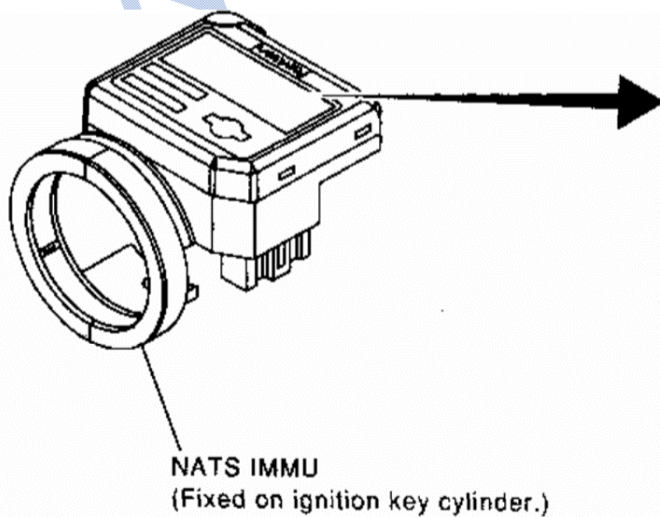
Kila **NATS IMMU** has its own specific **PIN**. (Go [www.5021.tips/nats](http://www.5021.tips/nats) to get PIN calculators)! Alafu almost kila machine can enter (program) the **PIN**! Again kuna two types of **PIN**— “arbitrary” na “fixed”. It can be recognized by the label on NATS IMMU. Letter



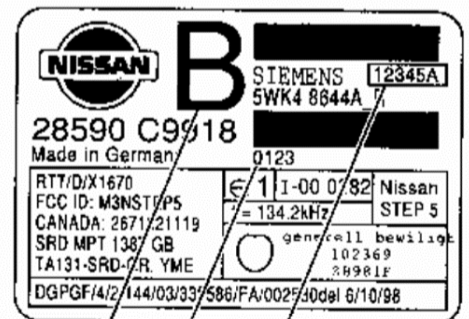
“A” or no mark on the label stands for “fixed” while letter “B” stands for “arbitrary”.

After selecting “**NISSAN ANTI-THEFT SYSTEM**”, kwenye diagnosis machine yako that now you need to enter the **PIN**, usishangae asking how where wapi to get the **PIN**, for free go [www.5021.tips/nats](http://www.5021.tips/nats) to get the **PIN calculator**, then please check the label on the **NATS IMMU**.

There is a 6-digit number at the upper position and a 4-digit number at the lower position of the label. Hebu angalia the photo below. Sasa kwenye hiyo software U have downloaded, weka the first 4 digits of the 6-digit number and the 4-digit number.



NATS IMMU  
(Fixed on ignition key cylinder.)



Upper 6-digit numerals\*1

Lower 4-digit numerals\*2

A or Nothing: Fixed type PIN code  
B: Random type PIN code

\*1: This 6-digit numerals is not PIN code.

Last two-digit characters are not necessary to inform Nissan distributor.

\*2: This 4-digit numerals is not PIN code.

Sasa, the control unit **must be initialized (matched)** whenever any of the 3 parts shown below is **replaced or foolishly played or tampered with** by YOU or any other fundi who didn't know!

- > **NATS ignition key**
- > **IMMU**
- > **ECM**

## **STEPS FOR INITIALIZING THE CONTROL UNIT**

Burundi) Click “C/U initialization” and then select “C/U initialization mode”.

Uganda) Turn ON the ignition key.

Tanzania) Enter the **PIN**

Rwanda) Click [OK] button to run the initialization program of control unit.

Kenya) When the initialization of **IMMU** and **ECM** is completed, the screen will display the message “Initialization completed”.

Turn OFF the ignition key alafu pull out the key (The first key can't be recognized in this step), So here's some detailed 'umbea' for matching the key:

a) Initialization

After **IMMU** initialization is completed, turn OFF the ignition switch with the first key and pull out the key. Wait 5 seconds (the first key can't be recognized). Then match the keys.

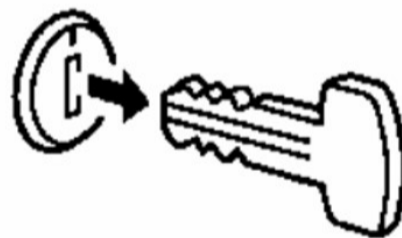
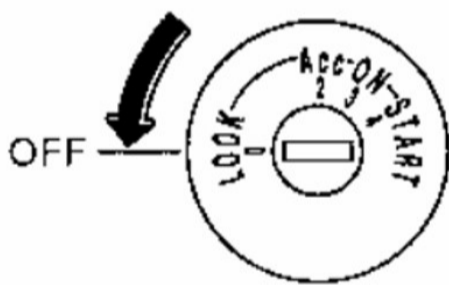
b) Match the keys

Step 1: Turn ON the ignition switch with the first key (do not start the engine) and keep it in place for at least 5 seconds. Then turn OFF the ignition switch and pull out the key. Wait 5 seconds.

Step 2: Turn ON the ignition switch with the second key (do not start the engine) and keep it in place for at least 5 seconds. Then turn OFF the ignition switch and pull out the key. Wait 5 seconds.

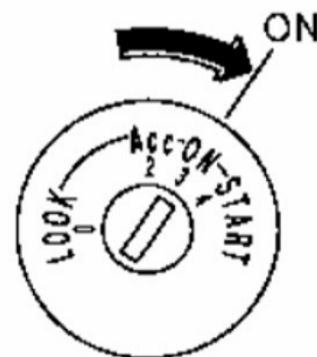
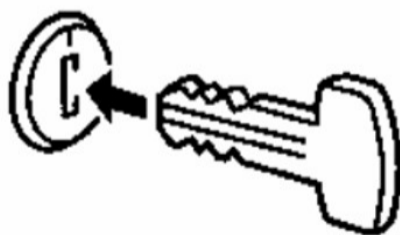
Step 3: Turn ON the ignition switch with the third key (do not start the engine) and keep it in place for at least 5 seconds. Then turn OFF the ignition switch and pull out the key. Wait 5 seconds (if there is another key to match). Hebu check this photo!

### **IGN OFF procedure:**



**Wait at least 5 sec.**

### **IGN ON procedure:**



**Wait at least 5 sec.**

**Do not “START” engine while KEY REGISTRATION.**

c) Lazima, check to see if the **NATS** safety indicator flickers (kuwaka waka hivi). The indicator is going to flicker when the key matching and initialization of control unit are completed.

ALAFU, for matching the key na ku verify that all keys are able to start the engine, insert each of the initialized keys into the ignition switch so that the system will reset it when the safety indicator starts flicker ni kama about 5 seconds hivi!

c) If the screen of your diagnosis machine displays the message that the initialization is stopped or failed, it indicates that machine yako imeshindwa in completion of initialization...lakini usikate taama, come oooooon, try following 'ujanja':

>Turn OFF the ignition switch and then turn it ON again to read trouble code.

>If "**IMMU**" is displayed, repeat the above mentioned steps.

**REMEMEMBER:**

(1) Use each of the keys to turn ON the ignition switch and then turn it OFF. The procedure for each key must last at least 5 seconds to ensure successful matching of the key.

(2) Make sure U gat all the keys for matching, not that unatafuta ile iko mbali alafu...U know?.

